



THE COLLEGE OF
OPTOMETRISTS

Stage Two

Overarching case scenario 20

AGE AND GENDER 16 yr old male

ETHNIC BACKGROUND. Caucasian

OCCUPATION AND HOBBIES Studying A levels. Wants to go to college to study fashion design

PRESENTING SYMPTOMS AND HISTORY Frontal headaches after 30 mins reading. Can read for no more than an hour before having to rest. No problems on waking in morning or at weekends.

Headaches worse later in the school day. Had first eye examination 4 years ago. No glasses prescribed. No other relevant ocular history.

GENERAL HEALTH AND MEDICATION Takes paracetamol for headaches, otherwise health good.

PRESENT Rx, CENTRATION AND ACUITIES No previous Rx

PD/NCO 62/58

VISION

R 6/5 L 6/5

PINHOLE VISION No improvement

REFRACTION

R +0.75 DS 6/5. N5

L + 0.75/-0.50 x 20 L 6/5. N5

ACCOMMODATION RE 4.50 DS LE 5.00 DS BE 2.50 DS

BINOCULAR STATUS

Cover Test

Distance. orthophoria

Near 10 prism exophoria, becoming R exotropia spontaneously and after dissociation

Mallet

Distance no misalignment

Near 4 prism Base In R and L

MOTILITY full

CONVERGENCE RE diverges with diplopia from 30 cm

PUPIL REACTIONS PERRLA; no RAPD

FUNDUS EXAMINATION see attached

FIELDS see attached

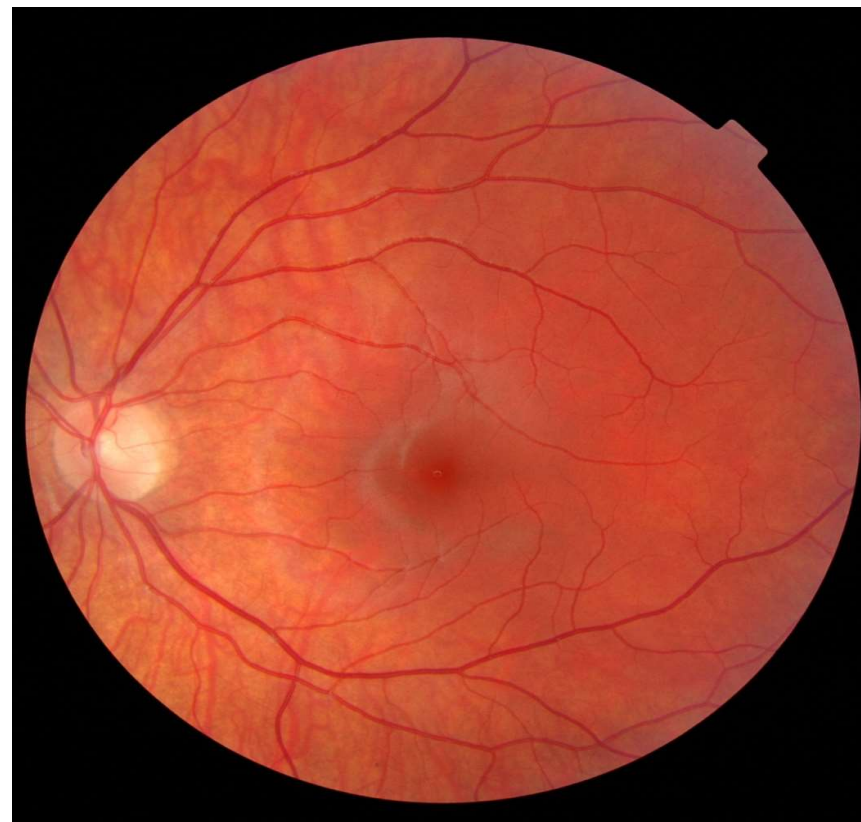
IOP R 14, 15, 17, 17 Av 16 mmHg L 17, 16, 17, 18 Av. 17 mm Hg Pulsair@ 10 am

EXTERNAL EYE EXAMINATION see attached

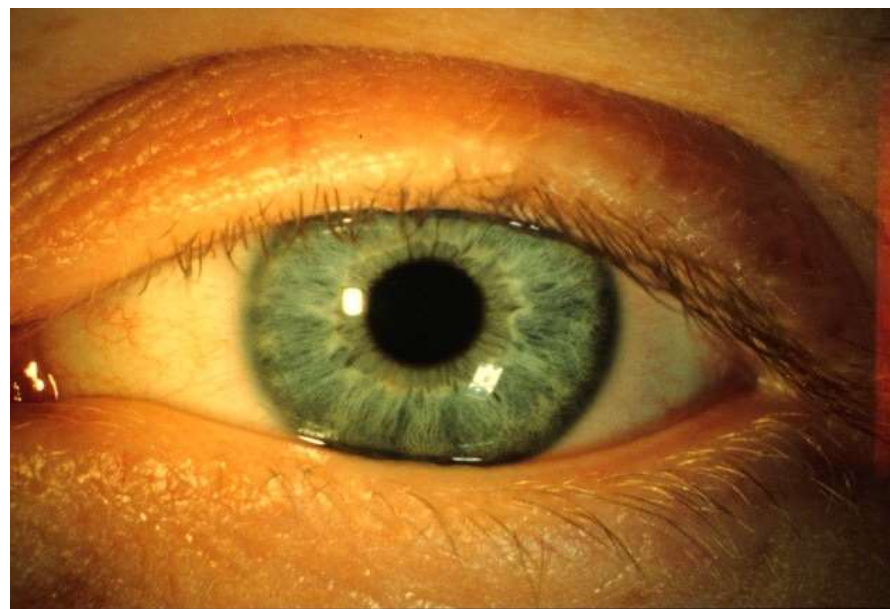
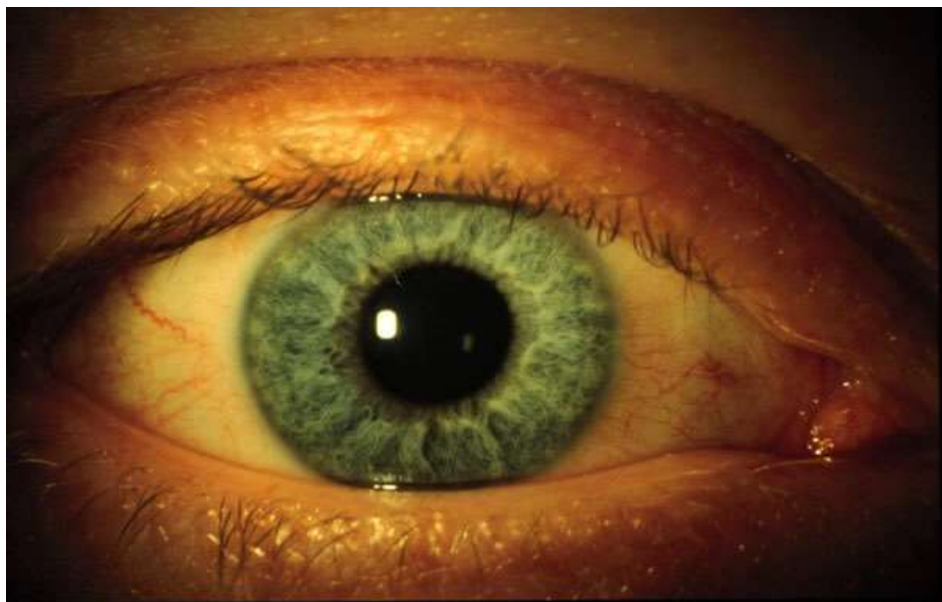
KERATOMETRY R 7.80@ 90 7.80@ 180 L 7.85 @90 7.85 @ 180

COLOUR VISION see attached

Fundus Image



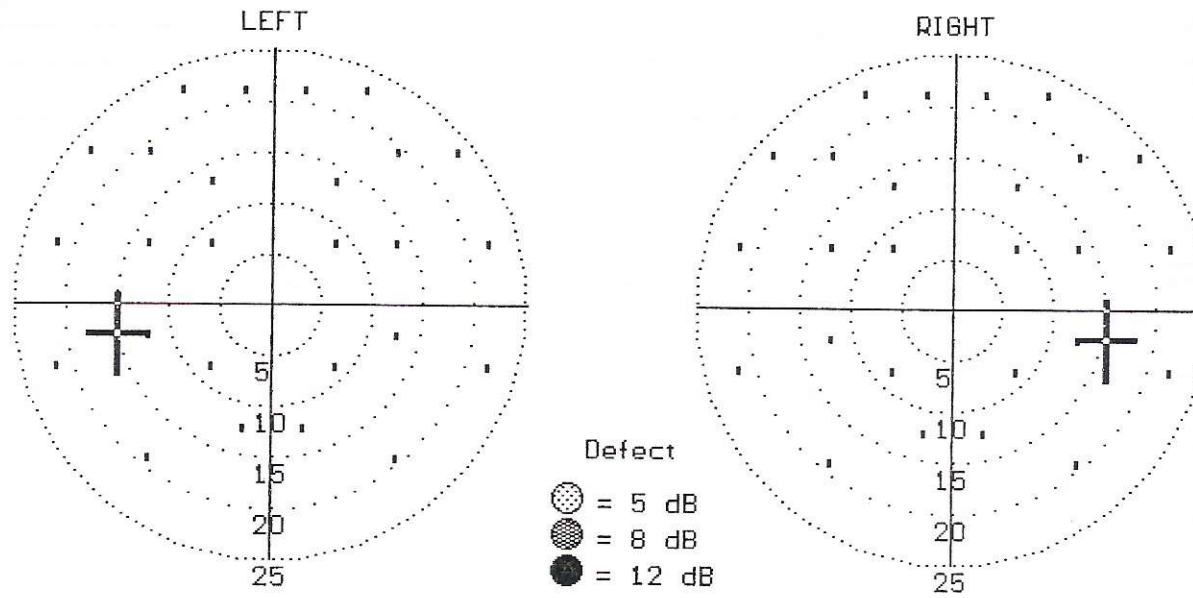
External Eyes



Field RE & LE

Multiple Stim Supra-thresh

Central Field Test



Missed/Presented = 0/26

Missed/Presented = 0/26

Threshold Sensitivity = 37 dB

Threshold Sensitivity = 36 dB

Colour Vision (Binocular)

ISHIHARA TEST SCORE SHEET (38-PLATE EDITION, 1979)

NAME:

DATE:

PLATE	SCORE	NORMAL	DEFICIENT	TOTAL CB/ WEAK	PROT		DEUTER	
					ANOPIA	ANOMALY	ANOPIA	ANOMALY
1	12	12	12	12	12	12	12	12
2	3	8	3	-				
3	6	6	5	-				
4	70	29	70	-				
5	35	57	35	-				
6	2	5	2	-				
7	5	3	5	-				
8	17	15	17	-				
9	21	74	21	-				
10	-	2	-/X					
11	-	6	-/X					
12	-	97	-/X					
13	-	45	-/X					
14	-	5	-/X					
15	-	7	-/X					
16	-	16	-/X					
17	-	73	-/X					
18	8	-	5	-				
19	2	-	2	-				
20	45	-	45	-				
21	73	-	73	-				
22	2	26			6	(2)6	2	2(6)
23	4(2)	42			2	(4)2	4	4(2)
24	3	35			5	(3)5	3	3(5)
25	9	96			6	(9)6	9	9(6)

NOTES: - no numeral read X incorrectly read A(B) A clearer than B